



---

# Study Abroad

at the University of Leeds

At the heart of the city of Leeds, West Yorkshire, the University was founded in 1904.

Globally renowned for the quality of our teaching and research, we are ranked in the top 75 universities (QS World University Rankings 2024) and are part of the Russell Group of UK research-intensive universities.

Teaching here is designed to be flexible, offering a blend of face-to-face and online learning. Our digital learning environment is interactive and engaging, using the latest multimedia facilities to stimulate discussion between students and tutors, as part of a supportive and community focused experience.

[www.leeds.ac.uk/about](http://www.leeds.ac.uk/about)



**UNIVERSITY OF LEEDS**

# Leeds

Leeds is a lively, multicultural city, surrounded by beautiful, accessible countryside. It's just two hours by train from London and three hours from Edinburgh.

The city centre has over 1,000 shops, over 300 bars and restaurants, 16 galleries and museums and four major theatres.

[www.leeds.ac.uk/citylife](http://www.leeds.ac.uk/citylife)



## A global university



**Top 75**  
university in  
the world

QS World University  
Rankings 2024



### Incoming study abroad and semester or year exchange

Through the study abroad and exchange programmes students are able to spend one or two semesters studying at the University of Leeds, and can transfer the credits earned back to their home universities. All exchange and study abroad students are taught with home and international students who are taking a full degree programme. There are a wide variety of modules (courses) available across seven faculties and there are pre-sessional and in-sessional English courses to help students develop their English language skills.

[studyabroad@leeds.ac.uk](mailto:studyabroad@leeds.ac.uk)

[www.leeds.ac.uk/incomingstudyabroad](http://www.leeds.ac.uk/incomingstudyabroad)

### Leeds International Summer School (LISS)

Leeds International Summer School offers students the opportunity to study at the University of Leeds and immerse themselves in British culture as part of an exciting two or four week programme each July. Taking advantage of the vibrant, student-friendly city of Leeds, and the history, culture and natural beauty of the area, the summer school combines world-class tuition with local knowledge, academic-related field trips, and a wide variety of social activities.

[summer@leeds.ac.uk](mailto:summer@leeds.ac.uk)

[www.leeds.ac.uk/summer](http://www.leeds.ac.uk/summer)

# Study abroad and exchange academic information

## Minimum GPA requirements

60 average (University of Leeds system)  
3.0 (US system)  
5.5 (Australian system – on the 7.0 scale)

Strategic partners may be able to take part in our Open Access scheme for the admission of students who don't meet standard entry requirements. If you would like to discuss our Open Access scheme or if a student has not met the grade requirement and there were factors that negatively affected their grades, please contact the Study Abroad Office as we can take mitigating circumstances into account and review such requests on a case-by-case basis.

## Minimum language requirements

Language evidence is not required when applying from a country on the UKVI exceptions list:

[www.gov.uk/student-visa/knowledge-of-english](http://www.gov.uk/student-visa/knowledge-of-english)

All other applicants will need to provide English Language evidence to the University as part of their application. The standard entry requirement is IELTS 6.0 (overall), with 5.5 in each component, or equivalent qualification.

At our discretion applicants for a single semester, and who are taking a taught degree programme in the medium of English at their home university, do not need to provide English Language evidence, if they apply for a Visitor Visa which allows them to remain in the UK for up to 6 months.

Please note: 1) We must base decisions on the language level shown on the last evidence the student submits. 2) Some teaching schools have a higher requirement than our standard minimum.

[www.leeds.ac.uk/incominglanguages](http://www.leeds.ac.uk/incominglanguages)

## Undergraduate module (course) information

As a study abroad student you can apply for modules from across the University. Please look at our module catalogue and search by 'incoming study abroad'.

[www.leeds.ac.uk/incomingstudy](http://www.leeds.ac.uk/incomingstudy)

Priority will be given to students who study the related subject as their degree major. Specific academic subject guidance should be checked at [www.leeds.ac.uk/incomingschoolguidance](http://www.leeds.ac.uk/incomingschoolguidance)

Medicine and Dentistry modules cannot be studied unless students are applying via a specific exchange agreement with these disciplines.

## Postgraduate module (course) information

Some teaching schools may allow exchange students to apply for postgraduate modules. The postgraduate module catalogue can be accessed from [www.leeds.ac.uk/incomingstudy](http://www.leeds.ac.uk/incomingstudy)

Pre requisites must be met and applicants should carefully consider if there are suitable modules available before submitting an application.

Applicants should note that academic transcripts for postgraduate modules are not released until the November after studies have ended.

## Course load per semester

60 Leeds credits per semester/120 credits for the full academic year.

Students may take 50 credits per semester and still be considered a full-time student, but must have this agreed with their home university.

10 Leeds credits (5 ECTS) is equivalent to 100 hours of study, including lectures, seminars and independent learning.

## Module (course) duration

Some modules take two semesters (the full academic year) to complete. These modules are listed as 'Semester 1 and 2' in the module catalogue. Students cannot study a 'Semester 1 and 2' module if they are coming to Leeds for one semester only.

Most modules in these schools are 'Semester 1 and 2' modules:

- Chemical and Process Engineering (CAPE)
- Design (Fashion Design and Fashion Marketing modules)
- Healthcare (HECS)
- Mechanical Engineering (MECH and PDES)

Therefore, students coming to Leeds for one semester only, would need to choose modules in other disciplines or teaching schools to make up their credit load. They will need to consider carefully if their intended programme of study meets the requirements of their home university.

## Fine Art, Design and Performance Music

Studio practice modules in the teaching schools of Fine Art, Design and Performance Music modules are open to students studying these subjects as majors at their home university.

Students should send a portfolio (Fine Art and Design) or performance recording (Music) to the relevant teaching School to obtain permission to apply for studio/performance modules. The portfolio check process can be found at

[www.leeds.ac.uk/incomingschoolguidance](http://www.leeds.ac.uk/incomingschoolguidance)

## Nomination from partner institution

Nomination instructions will be sent to partners and agents in February and September. All students must be nominated and have applied by the deadline.

## Application form

Nominated applicants apply online at [www.leeds.ac.uk/incomingapply](http://www.leeds.ac.uk/incomingapply)

Students applying for core Design, studio Design or studio Fine Art modules should submit a portfolio of work to the relevant school prior to their formal application. Further guidance can be found at [www.leeds.ac.uk/incomingschoolguidance](http://www.leeds.ac.uk/incomingschoolguidance)

## Pre-sessional language courses

If students do not meet our standard minimum entry requirements, the Language Centre offers a range of pre-sessional courses starting in September, January, July and August. The language requirements and fees information for these courses are at [www.leeds.ac.uk/incominglanguages](http://www.leeds.ac.uk/incominglanguages)

# Leeds International Summer School (LISS) academic information

## Minimum GPA requirements

50 average (University of Leeds system)  
2.5 (US system)  
5.0 (Australian system – on the 7.0 scale)

If a student has not met the grade requirement and there were factors that negatively affected their grades, please contact the Study Abroad Office as we can take mitigating circumstances into account and review such requests on a case-by-case basis.

## Minimum language requirements

Language evidence is not required when applying from a country on the UKVI exceptions list:

[www.gov.uk/student-visa/knowledge-of-english](http://www.gov.uk/student-visa/knowledge-of-english)

All other applicants will need to provide English Language evidence to the University as part of their application. The entry requirement is IELTS 5.5 (overall), with 5.0 in each component, or equivalent qualification.

At our discretion applicants for Leeds International Summer School, and who are taking a taught degree programme in the medium of English at their home university, do not need to provide English Language evidence, if they apply for a Visitor Visa.

Please note we must base decisions on the language level shown on the last evidence the student submits.

[www.leeds.ac.uk/summerapply](http://www.leeds.ac.uk/summerapply)

## Course load per semester

10 Leeds credits per two-week block/20 credits for the full four-week programme.

10 Leeds credits (5 ECTS) is equivalent to 100 hours of study, including lectures, seminars and independent learning.

## Undergraduate module (course) information

Students should choose one 10-credit module from block one of LISS and/or one 10-credit module from block two.

[www.leeds.ac.uk/summerstudy](http://www.leeds.ac.uk/summerstudy)

## Module (course) duration

All LISS modules comprise two weeks of intensive study

- block one module – two weeks
- block two module – two weeks.

## Application form

Students choose modules during their online application. Students can apply directly to LISS online at

[www.leeds.ac.uk/summerapply](http://www.leeds.ac.uk/summerapply)

## Pre-sessional language courses

If students do not meet the language requirement for LISS, they may be eligible to study the undergraduate pre-sessional English course taught by the Language Centre.

[www.leeds.ac.uk/summerapply](http://www.leeds.ac.uk/summerapply)

Application procedure		
	Study abroad and exchange	Leeds International Summer School
<b>Supporting documents – all applicants</b>	1. Transcript of records (in English) 2. Description of the grading system at the home university 3. Copy of the information page of the applicant's passport or ID card	1. Transcript of records (in English) 2. Supporting statement
<b>Supporting documents if necessary</b>	1. English language certificate (TOEFL/IELTS) if required 2. European language questionnaire (for non-English taught modules)	1. English language certificate (IELTS/TOEFL/TOIEC) if required 2. Scholarship application, for students who meet the eligibility requirements (optional)
<b>Acceptance decision from the University of Leeds</b>	Once students have applied to the University of Leeds, their application will be reviewed within six weeks.	Once students have applied to LISS, their application will be reviewed within three weeks.
<b>Module enrolment outcome</b>	Module enrolment will be confirmed: <ul style="list-style-type: none"> <li>• September start – from mid-June</li> <li>• January start – four weeks after the student submits their module choices</li> </ul> If students are not accepted for all their module choices they will be given the opportunity to select new modules.	Module enrolment will be confirmed after students pay the non-refundable LISS deposit (payable within one week of receiving their LISS acceptance).
<b>Visa application (non EU nationals)</b>	<a href="http://www.leeds.ac.uk/studyabroadvisa">www.leeds.ac.uk/studyabroadvisa</a>	

# Student support

## **Arrival and orientation**

Before they arrive, students will receive information about the buddy group and their orientation programme, which includes compulsory welcome talks and social events.

[www.leeds.ac.uk/incomingprepare](http://www.leeds.ac.uk/incomingprepare)

Students can also talk to current students about their experiences and to ask questions about what it's like to study in Leeds through our Link to Leeds Ambassador Scheme.

[www.leeds.ac.uk/linktoleeds](http://www.leeds.ac.uk/linktoleeds)

## **Accommodation**

University of Leeds accommodation is guaranteed to all new international students who apply by the accommodation application deadline. There is a wide range of accommodation available – on and off campus, catered and self-catered and en-suite or standard (not en-suite).

[accommodation.leeds.ac.uk](http://accommodation.leeds.ac.uk)

## **Student Information Service**

This service offers a dedicated helpline, email contact and information points on campus to help navigate students through their studies, answer any questions or signpost to the right people.

[students.leeds.ac.uk/askingforhelp](http://students.leeds.ac.uk/askingforhelp)

## **Global Opportunities Team**

Offers specialist guidance to students studying at the University for a short programme.

[www.leeds.ac.uk/incomingstudyabroad](http://www.leeds.ac.uk/incomingstudyabroad)

## **Academic Schools**

Each full-year or single-semester student is allocated to a parent school, which becomes the main point of contact for your students after they have arrived.

Parent schools monitor attendance and provide students with a personal tutor.

The study abroad coordinator (for full-year or single semester students) is an academic point of contact for your students.

## **Student Visa Team**

The Student Visa Advice Team can offer advice about immigration and living in the UK.

[students.leeds.ac.uk/internationalstudents](http://students.leeds.ac.uk/internationalstudents)

## **Global Community**

The Global Community team organise events and activities which enable our study abroad students to make the most of their time in Leeds and the UK. This varied programme runs throughout the year, with special trips and events organised within and out of term time.

[www.leeds.ac.uk/globalcommunity](http://www.leeds.ac.uk/globalcommunity)

## **Skills@library**

Skills@library offers lots of services to students to support their academic studies. These include one-to-one appointments and workshops on structuring essays, critical thinking and more. There are also Flying Start resources, aimed at all students new to the University of Leeds.

[library.leeds.ac.uk/skills](http://library.leeds.ac.uk/skills)

## **Disability Services**

The Disability Services team helps students with physical disabilities, learning difficulties or mental health conditions throughout their time at Leeds. Our expert team will work with students before their arrival to make any necessary arrangements to support their time at Leeds.

[students.leeds.ac.uk/disabledstudents](http://students.leeds.ac.uk/disabledstudents)

## **Student Counselling and Wellbeing Service**

The Student Counselling and Wellbeing Service provides free professional and confidential counselling, wellbeing and mental health support through one-to-one appointments, workshops, groups and web-based self-help.

[students.leeds.ac.uk/supportandwellbeing](http://students.leeds.ac.uk/supportandwellbeing)



# Student opportunities

## **Leeds for Life**

This service supports personal and professional development and helps students get the most out of their time at the University of Leeds.

[www.leeds.ac.uk/leedsforlife](http://www.leeds.ac.uk/leedsforlife)

## **Leeds University Union (LUU)**

Independent of the University, the students' union (Leeds University Union) represents the student community. The students' union building is at the centre of campus, with a range of facilities and services for students, including Student Advice. LUU runs over 300 student-led clubs and societies, offering students leadership responsibilities and the chance to meet people who share their interests.

[www.luu.org.uk](http://www.luu.org.uk)

## **The Careers Service**

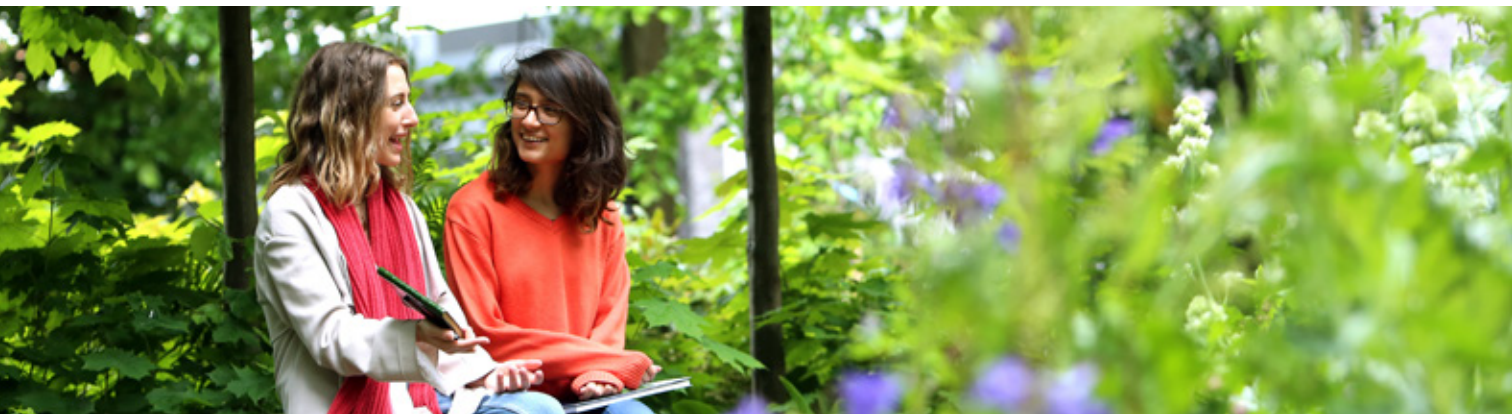
All students and alumni have access to the Careers Service. The Careers Service can help students prepare for job applications and interviews, as well as hosting events on campus that bring together students and employers.

[careerweb.leeds.ac.uk](http://careerweb.leeds.ac.uk)

## **Sport and fitness**

Whether you want to keep fit, play sport socially or compete at a high level, you'll find everything you need at Leeds to be active and feel your best.

[sport.leeds.ac.uk](http://sport.leeds.ac.uk)



# Important dates

	Pre-sessional English courses	Semester 1 September–January	Semester 2 January–June	Leeds International Summer School
Nomination and application deadlines	January start: <b>15 November</b> July and August start: <b>31 May</b> September/October start: <b>15 January</b>	<b>15 April</b> (preferred)	<b>October 31</b> (preferred)	Early application: <b>1 April</b> General application: <b>1 May</b>
Applications may be considered after these dates although other factors will be considered, such as availability of modules and time it takes for a student to obtain a visa.				
Accommodation application deadline	Two months before course start date	1 July	1 December	N/A (accommodation is organised for LISS students)
Suggested arrival	Two days before course start	Week 3 of September	Saturday before teaching starts	Weekend before the start of classes
International orientation	First week of course	Week 3 and 4 of September	Thursday to Saturday before teaching starts	First three days of LISS
Lecture dates	The duration of the programme	Week 1 of October to week 2 of December	Late January to week 1 of May	The duration of the programme
Examinations	End of programme	Week 3 and 4 of January	Mid-May to early June	N/A



**3rd**  
in the UK  
for student  
experience

Times Higher Education  
Student Experience  
Survey 2018

## Examinations

There are two exam periods at the University of Leeds: one in January and one in May/June.

If Semester 1 students find that teaching at their home university clashes with the January exam period, they can apply to take exams at their home university. They will pay a fee for this.

[students.leeds.ac.uk/  
personalisedexamarrangements](https://students.leeds.ac.uk/personalisedexamarrangements)

If students need to re-sit all or part of a module, the re-sit period is in August. These resits may be taken overseas if appropriate. This will involve a fee.

LISS modules are assessed by other means, such as coursework, presentations, practical assignments in class.



## Grade conversions

UK mark	Recommended US grade
70–100	A
68–69	A-
63–67	B+
58–62	B
53–57	B-
50–52	C+
45–49	C
40–44	C-
0–39	Fail

UK mark	Recommended ECTS grade
70–100	A
60–69	B
50–59	C
41–49	D
40	E
0–39	F

## Transcripts

All undergraduate official transcript of records will be released in late-July after the results are officially released.

Semester 1 only students will receive an electronic provisional transcript in late February. Please note that these marks remain provisional, and are therefore subject to change, until they are officially released in July.

Postgraduate marks are officially released in November, so official transcripts for students who have taken postgraduate modules may not be available until this time.

LISS students will receive their transcripts in September.





**UNIVERSITY OF LEEDS**

Study Abroad Office  
University of Leeds  
Leeds LS2 9JT  
United Kingdom

[studyabroad@leeds.ac.uk](mailto:studyabroad@leeds.ac.uk)  
[www.leeds.ac.uk/studyabroad](http://www.leeds.ac.uk/studyabroad)